
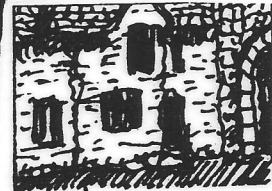


THE CURLICUES OF PILTON

A CURLICUE (curley 'q') ... originally meant a type of hairstyle, worn by sailors, thus →  ... IT LATER CAME TO MEAN ANY DECORATIVE TWIST OR SMALL QUIRK.

© When HORSE AND BAMBOO

First visited PILTON VILLAGE our immediate impression was of a MAZE-like labyrinth of paths and streets, dotted with strange and interesting buildings and places... these we called **CURLICUES**.

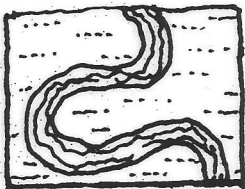


THE ALMS-HOUSES

were voted the favourite Curlicue by readers of the 'CURLICUE TIMES'

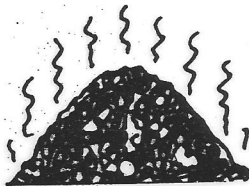


THE GOLDEN WEATHERCOCK who looks down onto everything.



THE RIVER YEO....

where settlement here started long ago. Now PILTON PARK SITE.



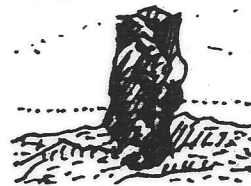
PILTONS DUNGHEAP now long buried, but once the source of innumerable scandals!

BULL HOUSE. Another popular Curlicue.

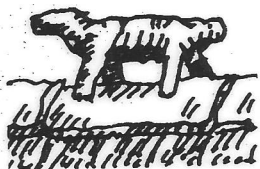
Rumoured to hide many mysterious underground passages.



THE LADYWELL. The source of Holy Water?



THE LONGSTONE. One of Piltons real puzzles! Nobody seems to know much about this one at all.



THE ANIMAL sitting high up above the Church Hall.

ST. MARGARETS. Pilton was once the site of a Leper Hospice.



THE RECLUSE



Once lived in St. Agnes Chapel, which was in the present churchyard

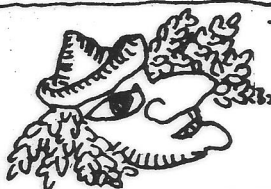
THE PRIORS RING



was rediscovered in 1867, buried in the church

Yard **THESE ARE TWELVE CURLICUES**

~ there are many more! MAZES & SPIRAL DANCES ARE TRADITIONAL TO THE EASTER PERIOD.



THE GREEN MAN carving on the church screen

... a wood-demon or a symbol of SPRING and RESURRECTION