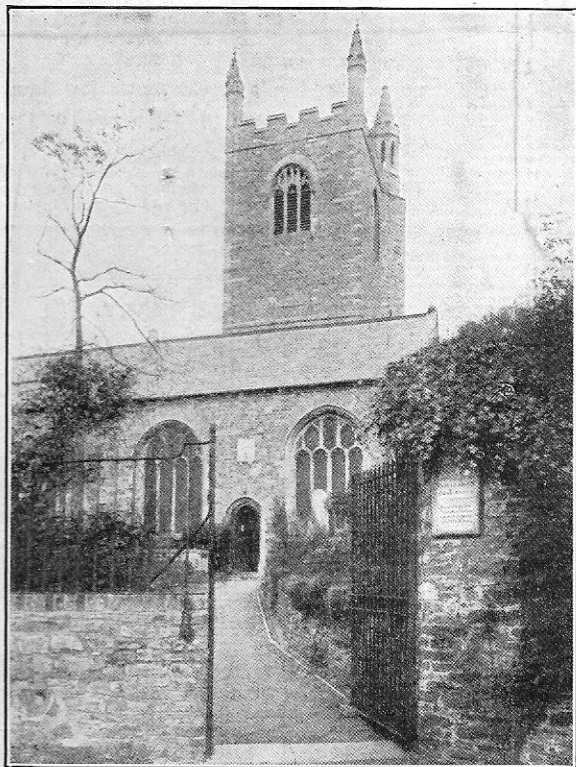


# *Blotter - Calendar Year Book, 1924-25.*



Pilton Church.

---

With the Compliments of  
REV. W. H. M. BAGLEY, M.A.,  
The Vicarage, Pilton,  
and  
REV. R. C. W. L. LAMPLUGH,  
St. Mary Magdalene Vicarage,  
Barnstaple.

---



St. Mary Magdalene Church.

# Pilton Parish Church, Barnstaple.

Vicar: REV. W. H. M. BAGLEY, M.A.

Churchwardens: MR. CHARLES PEARCE and MR. W. T. SANDERS.

Organist and Choirmaster: MR. G. W. LEE.

Assistant-Curate: REV. J. LEWIS JONES, B.A.

Clerk: MR. J. THOMAS.

Sexton: MR. A. WARR.

Lay Representative on Diocesan Conference—Mr. C. Pearce.

Lay Representatives on Ruridecanal Conference—Mrs. Bagley, Mrs. Fisher, Mr. Denning and Mr. C. Pearce.

Church Council—*Ex-Officio*—The Assistant Curate, the Lay Representatives on the Diocesan and Ruridecanal Conferences. The Churchwardens—Messrs. C. Pearce and W. T. Sanders.

Elected—Miss Bowden, Mrs. Harding, Mrs. Pearce, Mrs. Templer, Mrs. Driver Williams, Messrs. Albin Abbott, Felix Abbott, S. H. Allen, Bale, J. W. Boyle, W. P. Gammon, W. Gilbert, J. S. Holmes, G. W. Lee, W. J. Lord, F. Morgan, G. S. Pitts Tucker, J. Thomas, T. Trevisick, H. G. Roff, F. E. Ingerson.

Co-opted—Mrs. Conyers, Mrs. Parsons, Messrs. Albert Abbott and H. S. Stevens. Vice-Chairman—Mr. W. T. Sanders.

## Services.

SUNDAY:—8.10 a.m. Holy Communion every Sunday.

11 a.m. Morning Prayer, Litany and Sermon, on the 2nd, 4th and 5th Sundays in the month.

Morning Prayer, Holy Communion with Sermon, on 1st and 3rd Sundays in the month and Holy Communion at 12 noon on the 4th Sunday.

3 p.m. Children's Service on the last Sunday in the month.

3.30 p.m. Baptisms (notice should be given).

6.30 p.m. Evening Prayer and Sermon.

N.B.—The Churchwardens depend upon the weekly offertory and the Free Will Offerings for all the expenses of the Church; with the exception of ten shillings a year, there is no endowment for that purpose.

## Calendar 1924-25.

OCTOBER	NOVEMBER.	DECEMBER.	JANUARY, 1925.	FEBRUARY.	MARCH.
1 Wednesday	1 Saturday	1 Monday	1 Thursday	1 Sunday	1 Sunday
2 Thursday	2 Sunday	2 Tuesday	2 Friday	4th after Epiphany.	1st in Lent.
3 Friday	20th after Trinity.	3 Wednesday	3 Saturday	2 Monday	2 Monday
4 Saturday	3 Monday	4 Thursday	4 Sunday	3 Tuesday	3 Tuesday
5 Sunday	4 Tuesday	5 Friday	5 Monday	4 Wednesday	4 Wednesday
16th after Trinity.	5 Wednesday	6 Saturday	6 Tuesday	5 Thursday	5 Thursday
6 Monday	6 Thursday	7 Sunday	7 Wednesday	6 Friday	6 Friday
7 Tuesday	7 Friday	2nd in Advent.	8 Thursday	6 Saturday	7 Saturday
8 Wednesday	8 Saturday	8 Monday	8 Thursday	7 Sunday	8 Sunday
9 Thursday	9 Sunday	9 Tuesday	9 Friday	Septuagesima.	2nd in Lent.
10 Friday	21st after Trinity.	10 Wednesday	10 Saturday	9 Monday	9 Monday
11 Saturday	10 Monday	11 Thursday	11 Sunday	10 Tuesday	10 Tuesday
12 Sunday	11 Tuesday	12 Friday	1st after Epiphany.	11 Wednesday	11 Wednesday
17th after Trinity.	12 Wednesday	13 Saturday	12 Monday	12 Thursday	12 Thursday
13 Monday	13 Thursday	14 Sunday	13 Tuesday	13 Friday	13 Friday
14 Tuesday	14 Friday	3rd in Advent.	14 Wednesday	14 Saturday	14 Saturday
15 Wednesday	15 Saturday	15 Monday	15 Thursday	15 Sunday	3rd in Lent.
16 Thurs.—St. Luke	16 Sunday	16 Tuesday	16 Friday	Sexagesima.	16 Monday
17 Friday	22nd after Trinity.	17 Wednesday	17 Saturday	16 Monday	17 Tuesday
18 Saturday	17 Monday	18 Thursday	18 Sunday	17 Tuesday	18 Wednesday
19 Sunday	18 Tuesday	19 Friday	2nd after Epiphany.	18 Wednesday	19 Thursday
18th after Trinity.	19 Wednesday	20 Saturday	19 Monday	19 Thursday	20 Friday
20 Monday	20 Thursday	21 Sunday	20 Tuesday	20 Friday	21 Saturday
21 Tuesday	21 Friday	4th in Advent.	21 Wednesday	21 Saturday	22 Sunday
22 Wednesday	22 Saturday	22 Monday	22 Thursday	22 Sunday	4th in Lent.
23 Thursday	23 Sunday	23 Tuesday	23 Friday	Quinquagesima.	23 Monday
24 Friday	Before Advent.	24 Wednesday	42 Saturday	23 Monday	24 Tuesday
25 Saturday	24 Monday	25 Thursday	25 Sunday	24 Tuesday	25 Wednesday
26 Sunday	25 Tuesday	Christms Day.	3rd after Epiphany.	25 Wed.—Ash Wed.	26 Thursday
19th after Trinity.	26 Wednesday	26 F.—St. Stephen	26 Monday	26 Thursday	27 Friday
27 Monday	27 Thursday	27 Sat.—St. John.	27 Tuesday	27 Friday	28 Saturday
28 Tuesday	28 Friday	28 Sunday	28 Wednesday	28 Saturday	29 Sunday
29 Wednesday	29 Saturday	1st after Christmas.	29 Thursday		5th in Lent.
30 Thursday	30 Sunday	29 Monday	30 Friday		30 Monday
31 Friday	1st in Advent.	30 Tuesday	31 Saturday		31 Tuesday
		31 Wednesday			

'Phone 57.

## "THE IDEAL BEVERAGE."

# PRIDEAUX'S FRESHLY ROASTED COFFEE

Unrivalled for Fragrance and Delicious after-taste.

26, HIGH STREET, BARNSTAPLE.

# E. LORD,

*Spirella Corsetiere.*

Dressmaker  
and  
Costumier.

41, BEAR STREET  
BARNSTAPLE.

AGENT FOR VAUGHAN'S, THE CARDIFF DYERS  
AND DRY CLEANERS.

Telephone 95.  
Telegrams: Smallridge, Barnstaple.

## Smallridge & Co.



*Florists :: ::  
Fruiterers, etc.,*

73-74, Boutport Street,  
BARNSTAPLE.

Funeral Wreaths, Crosses  
and other Designs.

Bridal and Presentation Bouquets made  
to order at the shortest notice.

CHOICE FLOWERS, FRUIT & GARDEN PRODUCE  
FRESH DAILY.

Telephone 236

## A. & F. Northcote,

Open or Closed  
Cars on Hire,  
Day or Night.

Garage and Repairs.

YEO VALE GARAGE,  
BARNSTAPLE.



Telephone No. 86.

Trumps, Ltd.,  
Seedsman,  
HIGH STREET,  
BARNSTAPLE.



# BROMLEY'S CAFÉS

(LATE BROOKS),

*Bakers, Confectioners,  
— and Caterers. —*

50 AWARDS FOR EXCELLENCE.

A postcard will bring our Motor Van to your door.

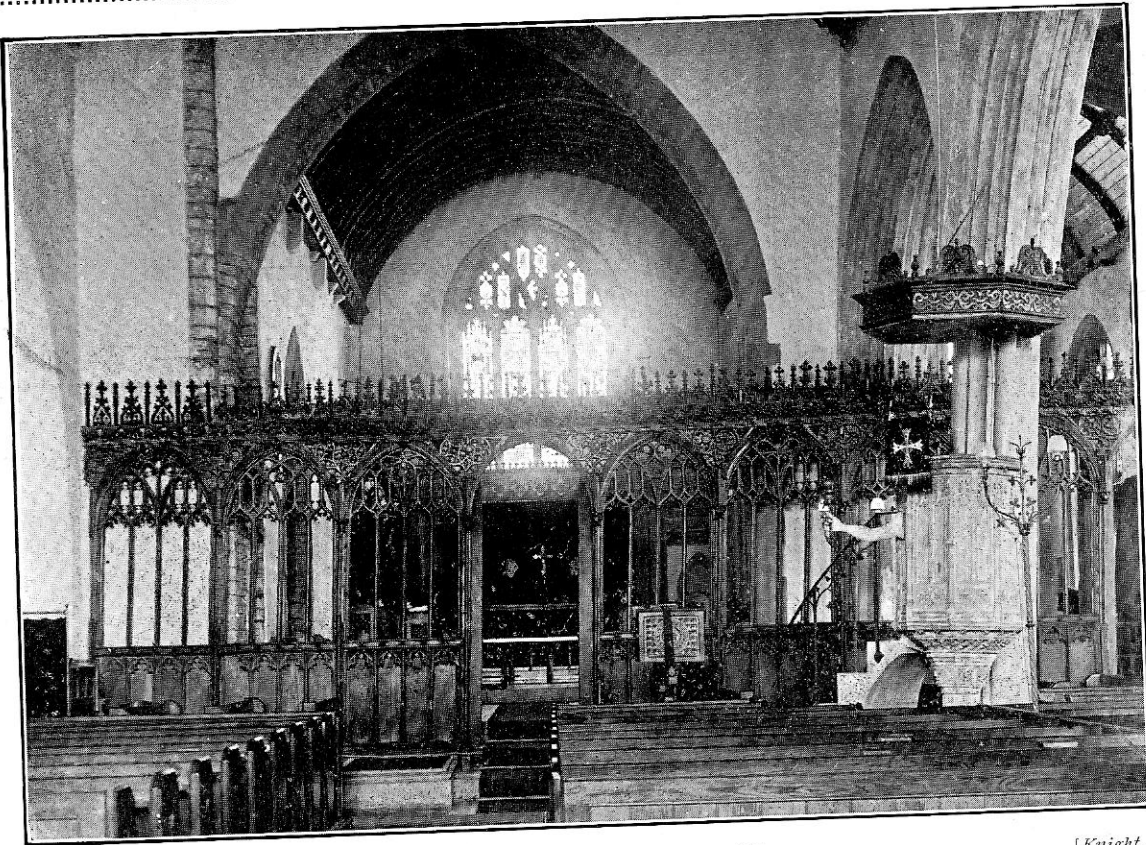
**BARNSTAPLE & BIDEFORD.**

# Hoare & Sydenham,

*General and  
Fancy Drapers.*

Specialité Costumiers.

**6 & 7, Joy St., Barnstaple.**



**T** HIS Church is a Priory Church.

The Priory is supposed to have been founded by King Athelstan (925—940), but there is no absolute proof of this. Here are, however, two facts which seem to bear out this tradition. Pilton Priory was a cell of Malmesbury Abbey, and provided at least two of the Abbots of Malmesbury. King Athelstan granted or Confirmed a Charter

Photo by

INTERIOR, PILTON CHURCH.

[Knight.]

# SAMUEL AYRE,

*Family Butcher.*



*Dairy-fed  
Pork,  
Home-made Sausages,  
Home-cured Bacon,  
Pickled Briskets, Silver-  
sides and Ox Tongues.*

BEST IS  
CHEAPEST

**3, Joy Street, Barnstaple**

# STACEY,

BEAR STREET,

**Tailor & Outfitter.**

to Malmesbury, and he was buried there. The beautiful Seal of the Priory, of which there is an impression in the present Vestry, has on its reverse side a figure of Athelstan, and round it is the legend Hoc—Athelstanus—Ago—Quod—Presens—Signat—Imago. This seal was presumably made in 1412 to 1421. The matrix is still in existence in the British Museum.

The Priory was dissolved in 1533, but the Church was left. If King Athelstan founded the Priory, we must be very near the 1000th Anniversary of the planting of a Church in Pilton.

The present Church was dedicated by Bishop Broncombe, of Exeter, in 1259. The Tower was built in 1270, or rather, according to a deed still in existence, was then rebuilt, suggesting there was a Tower and Church before that date. The upper part of the tower was pulled down during the civil wars in 1646, and there is a tablet on the South Porch recording this :

THE TOWER OF THIS PARISH BEING  
BY FORCE OF ARMS PUL'D  
DOWN IN YE LATE UNHAPPY  
CIVIL WARS ANNO DOM 1646  
WAS REBUILT 1696.

The Priory Buildings were adjoining the East and North of the Tower. There were also cloisters along the outside of the North Wall, which probably accounts for the windows in the N. Aisle being placed so high.

There is a very fine peal of eight bells in the Tower, reckoned to be the best peal in N. Devon. Six were placed there in 1712—the other two in 1853, when 1, 2, and 4, of the old peal were re-cast. The tenor weighs 25 cwts. 18 lbs.

Visitors to the Church generally enter by the Chancel Door; we will assume that we are entering with them, and will note anything worthy of remark as we go along. On entering we step into the

#### RALEIGH CHAPEL.

This was established as a Perpetual Chantry in the year 1320. We find in Bishop Stapeldon's Register, under date 9th January, 1319-20, this entry, "A perpetual Chantry to be celebrated in the Parish Church of Pilton for the souls of William de Raleghe, Knight, his progenitors and successors, and the souls of all the faithful dead."

This Chantry was soon removed to Raleghe Court, certainly by 1354, but this S. Chancel Aisle has always gone by the name of the Raleigh Chapel. On the Parclose Screen, a beautiful piece of carving, will be found the letter R., standing for Raleigh.

The family took its name from the estate of Ralega or Raleigh, mentioned in Domesday Book, from which we learn that in the time of Edward the Confessor (1045) and Harold, one Walter de Raleghe was in possession, who was killed at the Battle of Hastings, fighting on Harold's side. The family continued till 1365, when the sole heiress married John Chichester, and their successors held it for many years.

# FOR BEST COAL

YOU CANNOT DO BETTER

— THAN TRY —

## C. A. ABBOTT.

*From the Royal Eye Hospital, London.*

**H. POMROY CHAPMAN,**

(F.S.M.C.)

Sight Testing Refractionist

OF THE FIRM OF

**Chapman & Sons, Watchmakers & Jewellers**

**4, HIGH STREET, BARNSTAPLE,**

Can be consulted at any time at the Sight Testing Rooms at the above Premises.

Testing by Appointment.

Nominal Fee.

**R. L. KNIGHT,**

Photographer,

**THE STUDIO,**

**High Street, Barnstaple.**

Portraiture and Outdoor Photography.

There are no existing stones or monuments of the Raleigh family, but many of the Chichester family are buried in the Chancel or Raleigh Chapel, and we have two conspicuous monuments to the memory of members of the Family.

#### THE CHICHESTER MONUMENTS.

The oldest is a stone slab, lying in the centre of the Chancel, dated 1493, to the memory of Richard Chichester. On the right, as you enter the Raleigh Chapel, is an imposing monument to the memory of Sir John Chichester, of Raleigh, Knt., who died November 30th, 1569, and of his wife, Lady Gertrude, who died three years before, 30th April, 1566. Oliver, in his *Ecclesiastical Antiquities*, says this monument was erected in 1581. On this monument are many coats of arms, mostly concealed from view, as the monument has been removed from its original position.

Opposite, on the north side of the Chancel, is the monument of Sir Robert Chichester, the grandson of Sir John, and son of the Judge who died at Exeter at the Assizes, of an infectious fever, in 1585. Sir Robert married twice, and on the monument the sculptor has introduced effigies of the whole family,—Sir Robert, his two wives, one grown up daughter by his first wife, and two young children by his second wife. His first wife, the daughter of John, Baron Harrington of Exton, Rutland, who was the guardian of Princess Elizabeth, daughter of King James I., was a great lady, and her funeral in 1615, was conducted with great pomp. Sir Robert died in 1627, as a result it is reported, of a fall from his horse on Pilton Bridge.

The Altar is Elizabethan, made somewhere between 1570 and 1600, it has sliding panels—recalling the custom of the early days of the Reformation, when the communicants stood or sat round the table,—it could thus be lengthened if necessary.

The Altar rails, running the whole breadth of the Chancel and Raleigh Chapel, are of oak, and have a book-rest, which is uncommon.

On the right of the altar is a closed doorway. It formerly led into a small Chapel adjacent to a chamber in which lived a Recluse named Alicia in 1329. The Chapel was called St. Agnes' Chapel, and in 1332 a licence was granted by the Bishop for celebration of Holy Communion by a suitable priest. This chapel and chamber were still in existence about the middle of last century but had been so filled with rubbish, that it was ordered to be filled in and closed.

The fine entrance to the Vestry was bricked up for many years, leaving only a small door, but about 1872 it was discovered and opened up. On the vaulted roof of this entrance may be seen some remnants of the decoration which probably also adorned the groined roof of the Vestry, now destroyed. This roof started from the four pillars, still existing, and the remnants of arches show the height. As the Vestry is the ground floor of the Tower, it is very probable that this roof was destroyed when the upper part of the Tower was pulled down.

Separating the chancel from the Nave is a very fine Rood Screen, though the upper portion has been very roughly treated at some time. We are told that it was made and painted by Dr. Jonys in 1508! the original colouring being in gold, vermilion, and blue. At some time, possibly in Cromwell's day, it was painted all over with white paint, and this is now covered with paint in imitation of oak. Behind the Lectern may be seen some traces of the figures of Apostles and Saints, which were formerly painted on the panels.

The pulpit is of stone, excepting the door which is of wood. On the pedestal may be seen some remnants of the decoration which formerly adorned it. The principal attraction to visitors will probably be the arm and stand holding an hour-glass. It is not known when the arm and stand were placed there, but the original hour-glass has been lost, and the present one, which is old, was placed there in the middle of last century.

The Font itself is not remarkable, but the cover and canopy are fine examples of fifteenth century work. The cover was till lately covered with many coats of paint. When that was cleaned off, it was apparent that at some time it had been roughly treated but it still remains a very remarkable piece of carving. On the canopy there are examples of the linen pattern. At the side there is

an iron staple, to which formerly was attached the Chained Bible.

On the S. and N. Walls are some remains of passages of Holy Scripture in Black Letter, taken from an early translation; reminiscent of the Reformation, when it was ordered that Texts and Passages of Holy Scripture should be painted on the walls of Churches.

# THE DEVON ELECTRICAL ENGINEERING Co.,

## Engineers and Contractors,

*Showroom and Office:*

### 28, High Street, BARNSTAPLE.

ELECTRIC LIGHT, HEATING,  
BELLS, TELEPHONES & POWER

*COUNTRY HOUSE LIGHTING.*

**Any make of Automatic Lighting Set,  
Dynamo or Battery supplied and fixed.**

*Artistic Fitting. Repairs and all Accessories.*

*Shop-fitting*  
a  
*Speciality.*

Established 1870.

# R. RIDGE,

*Builder and Contractor,*  
**BARNSTAPLE.**

*Undertaker.*  
*Complete*  
*Funeral*  
*Furnisher.*

Office and Workshops:—COMMERCIAL ROAD.

On the West end of the N. Aisle is an elaborate Coat of Arms of Queen Anne, which at one time was placed over the Rood Screen.

On the S. Wall is an elaborate monument in memory of Christopher Lethbridge which records that he himself, in his lifetime, erected it under his own supervision in memory of himself and his family. Mr. Lethbridge died in 1713.

The stained glass Windows are all modern; only a few pieces of the ancient glass have survived, and they may be seen at the top of the windows in the N. Aisle. The windows in the Chancel are all in memory of members of the family of Rev. W. C. Hall, who was Vicar here from 1837 to 1889, with a break of seven years, 1843 to 1850.

The two windows in the S. Aisle are in memory of Mr. James Hartnoll and Mr. William Gould; and the West Window in the S. Aisle is in memory of Mr. William Fisher.

The West Window of the Nave is the Memorial Window to those who fell in the Great War. In view of the very general interest taken in this window, space may be found to give some description of it.

The two middle panels depict the Crucifixion: The Virgin is at the foot of the Cross, with S. John in the right hand panel. Above S. John is an angel comforting our Saviour upon the Cross.

Of the two outside Panels, the one on the right represents S. Alban, the first British Martyr, and a Roman Soldier; that on the left, S. Nicholas, the patron Saint of Sailors.

At the bottom of the window are representations in modern dress, of a nurse, a sailor, a member of the Flying Corps, and a soldier. Beneath, is a brass tablet on which is inscribed:

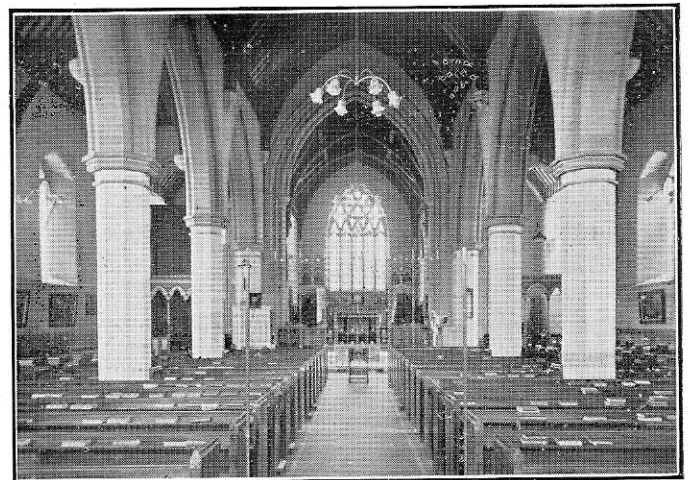
THIS WINDOW IS PLACED HERE TO THE  
GLORY OF GOD AND IN MEMORY OF THE MEN  
FROM THIS PARISH WHO LOST THEIR LIVES  
IN THE GREAT WAR 1914-1918.

E. G. Acland	W. T. Goss	H. T. Perrin
E. Alford	E. M. Gould	W. E. Radford
W. Ashton	W. I. Gratton	S. P. Sanders
F. L. A. Baker	F. W. Harris	N. H. Shapland
W. Barlow	W. A. Hedden	A. Steer
F. H. Braddon	J. Hill	E. G. Squire
W. Darch, Senr.	R. Hill	F. Tossell
W. Darch, Junr.	W. Hill	J. W. Turner
W. C. Darch	A. Jewell	H. Fry-Vicary
S. E. Dennis	W. H. Knill	F. Wickham
W. Ellis	W. Loosemore	G. Wickham
R. T. J. Frayne	F. Norman	B. R. Williams
W. J. Garnish	W. Norman	W. R. Yeo

In the Porch is a Board on which is recorded the names of all who served in the War.



## S. Mary Magdalene, Barnstaple.



INTERIOR.

Although the Church of S. Mary Magdalene cannot make any claim to ancient foundation, having been built in 1846, there is interest attached to the fact that its name is derived from the Priory of S. Mary Magdalene, which formerly stood near to the site of the present Church and on ground which belonged to it.



Antique  
Collectors.  
—o—  
Furniture  
Manufacturers.  
—o—  
Upholsterers  
and Polishers.  
—o—  
Furniture  
Warehoused.

# H. J. KNOTT & SONS

Complete House Furnishers,  
Removal Contractors,  
Undertakers, &c.,

**BEAR STREET, BARNSTAPLE.**

First-class  
Certificates with  
Honours City  
and Guilds  
Exhibition,  
London,  
1908-9-10.  
—o—  
Telegrams :  
KNOTT,  
BARNSTAPLE.  
—o—  
Accounts—  
Monthly.

The Rev. R. J. E. Boggis, Vicar from 1907 to 1918, in his "History of the Church and Parish of S. Mary Magdalene," a book which should be read by all who are interested in the Church, has taken infinite pains to set forth the story from which the following quotations are taken:—

The Priory was founded in 1107 A.D. by Joel of Totnes, one of the principal landowners of Devon, a man of great wealth and importance in the county, and standing high in the favour of William the Conqueror. It belonged to the Cluniac Order. The Barnstaple Priory appears to have been the Senior house in England of this Order, but was subject to the Priory of S. Martin in the Fields, at Paris, and subsequently to the mother house at Cluny, and "thus it was one of the hundred Alien Houses' in England"—a troublesome class, because the bishop had but little control over them, as their allegiance was rendered principally to their Ecclesiastical superiors in France.

For its support, it was endowed by Joel with the Manors of Pilton and Pillard, with the Barnstaple Mill (now the Town Mill) the inhabitants of the town being bound to have their corn ground there, with fishing rights in the adjoining waters. Also the tithes of S. Peter's Church and the Chapel of S. Sabinus and part of the tithes of Fremington.

The Priory during its history of more than 400 years, appears to have been of little importance, although it seems to have taken a considerable share in promoting the Fair for which Barnstaple is noted. At one time it was the least wealthy of all the Religious houses in the County, but towards the close of its career its circumstances improved. At the suppression of the smaller Monasteries—those whose income was under £200—in 1536, its revenue was £124, or about £1,500 in modern value, and was derived from manors and properties in a large number of the surrounding parishes. It also held the patronage of the Vicarage of Barnstaple, besides owning two mills, called Port Mills. All these became the property of Henry VIII and by him was granted to Lord William Howard, a son of Thomas Howard, second Duke of Norfolk and father of the Lord Howard of Effingham, who was High Admiral of England when the Spanish Armada was defeated.



**F. JENKIN,  
BEAR STREET DAIRY  
BARNSTAPLE.**

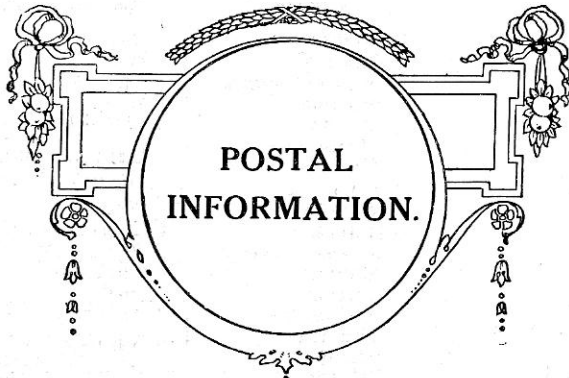
CREAM SENT BY PARCEL POST.  
JUNKETS MADE TO ORDER.

**FAMILIES WAITED ON DAILY.**

**S. H. ALLEN,  
*Builder and Contractor,*  
40, Pilton St., Barnstaple**

ESTIMATES FREE.

Jobbing Work Promptly & Personally attended to.



**POSTAL  
INFORMATION.**

**INLAND.  
LETTERS.**

Not exceeding 2 ozs. in weight, 1½d. Not exceeding 4 ozs., 2d.  
for every additional oz. ½d.

No letter may exceed 2 ft. in length, 1 ft. in width or 1 ft. in depth.

**POST-CARDS.**

Postage on every post-card, 1d., and on every reply post-card, 2d.

**PRINTED PAPERS.**

½d. for packets not exceeding 2 oz. For every additional 2 ozs.  
up to 2 lbs., ¼d.

Printed or written matter not in the nature of a letter may be  
transmitted by the packet post. Packets must be open to  
inspection.

**NEWSPAPERS.**

Postage on a registered newspaper, including any supplement  
thereto, 1d. for 6 ozs. and ½d. for each additional 6 ozs.

Newspapers not registered at the General Post Office are treat-  
ed in the post like any other printed matter.

**TELEGRAMS.**

1s. for first 12 words, and 1d. for each additional word.

**PARCELS.**

Not exceeding 2 lbs. in weight, 6d.; exceeding 2 lbs. but not  
exceeding 5 lbs., 9d.; exceeding 5 lbs. but not exceeding 8  
lbs., 1s.; exceeding 8 lbs. but not exceeding 11 lbs., 1s. 3d.

The size allowed for an Inland Parcel is:—Greatest length, 3 ft.  
6 ins., greatest length and girth combined, 6 ft. 0 in.

No parcel may exceed 11 lbs. in weight.

**POSTAL ORDERS.**

6d. to 2s. 6d., 1d.; 3s. to 15s., 1½d.; 15s. to 21s. 6d., 2d.

**MONEY ORDERS.**

**ORDINARY—**

For sums not over	£3	£10	£20	£30	£40
the charge is	4d.	6d.	8d.	10d.	1s.

TELEGRAPH—Poundage is charged at the same rate, plus sup-  
plementary fee of 2d. and cost of Telegram of Advice.

**BIRTHDAYS OF ROYAL FAMILY.**

King George V. born June 3rd, 1865.

Queen Mary born May 26th, 1867.

Prince of Wales born June 23rd, 1894.

Prince Albert Frederick Arthur George born December 14th, 1895.

Princess Victoria Alexandra Alice May born April 25th, 1897.

Prince Henry William Frederick Albert born March 31st, 1900.

Prince George Edward Alexander Edmund born Dec. 20th, 1902.

Prince John Charles Francis born July 12th, 1905.

The Queen Mother, Alexandra born December 1st, 1844.

Princess Louise Victoria Alexandra Dagmar (Princess Royal)  
born February 20th, 1867.

Princess Victoria Alexandra Olga Mary born July 6th, 1868.

Princess Maud Charlotte Mary Victoria (Queen of Norway)  
born November 26th, 1869.

Princess Louise Caroline Alberta (Duchess Dowager of Argyll)  
March born 8th, 1848.

**SYDNEY T. SANDERS, *Builder,***

Estimates  
Free.

**5, ALEXANDRA PLACE, BARNSTAPLE.**

# St. Mary Magdalene's, Barnstaple.

Vicar: REV. R. C. W. L. LAMPLUGH, St. Mary Magdalene Vicarage, Fort Hill, Barnstaple. Surrogate for Marriage Licences.

Deaconess:—DEACONESS SOPHIA, 12, Alexandra Road.

Organist:—MR. J. COURTNEY WILLIAMS, 23, Vicarage Lawn.

Lay Readers:—MR. G. F. LEFROY, B.A., Oxon., Orchard House, Pilton.

MR. E. T. A. ANDREWS, Hill View.

MR. H. J. MARTIN, 21, Newport Road.

Churchwardens—MR. A. J. B. ISAAC, Ashleigh Road.

MR. P. HARRIS, 18, Hill View.

## Services.

SUNDAYS.—Holy Communion 8 a.m. Mattins and Litany 10.15 a.m. Holy Eucharist. Choral Celebration with Sermon 11 a.m. Children's Service 2.45 p.m. Evensong with Sermon 6.30 p.m. Corporate Communion of C.E.W.S. at 8 a.m. the 1st Sunday in the month. C.E.W.S. Devotional Service 1st Thursday in the month at 3 p.m.

BIBLE CLASSES. Young Men, in Choir Vestry, 2.30 p.m. Young Women, at Vicarage, 3 p.m. Mrs. Lamplugh's Women's Bible Class is held in Choir Vestry every Tuesday Evening, at 7.30. Young Women's Bible Class, at Vicarage. Wednesday Evenings, 7.15.

SUNDAY SCHOOL. 10.15 a.m. and 2.30 p.m.

HOLY DAYS. Holy Communion 7.15.

## Calendar 1925.

APRIL.	MAY.	JUNE.	JULY.	AUGUST.	SEPTEMBER.
1 Wednesday	1 Friday	1 <i>Mon. in Whit Wk.</i>	1 Wednesday	1 Saturday	1 Tuesday
2 Thursday	2 Saturday	2 <i>Tues. in Whit Wk.</i>	2 Thursday	2 Sunday	2 Wednesday
3 Friday	3 Sunday	3 <i>Wed.—Ember Day</i>	3 Friday	3 <i>8th after Trinity.</i>	3 Thursday
4 Saturday	4 <i>3rd after Easter</i>	4 Thursday	4 Saturday	4 Monday	4 Friday
5 Sunday	5 Monday	5 Friday	5 Sunday	5 Tuesday	5 Saturday
6 <i>6th in Lent.</i>	6 Tuesday	6 Saturday	6 <i>4th after Trinity.</i>	6 Wednesday	6 Sunday
7 <i>Mon. before Easter</i>	7 Wednesday	7 Sunday	7 Monday	7 Thursday	7 <i>13th after Trinity.</i>
8 <i>Tues. before Easter</i>	8 Thursday	8 <i>Trinity Sunday.</i>	8 Tuesday	8 Friday	8 Monday
9 <i>Wed. before Easter</i>	9 Friday	9 Monday	9 Wednesday	9 Saturday	9 Tuesday
10 <i>Maunder Thursday</i>	10 Saturday	10 Tuesday	10 Thursday	10 Sunday	10 Wednesday
11 <i>Good Friday</i>	11 <i>4th after Easter</i>	11 Wednesday	11 Friday	11 <i>9th after Trinity.</i>	11 Thursday
12 <i>Easter Even</i>	12 Monday	12 Thursday	12 Saturday	12 Tuesday	12 Friday
13 Sunday	13 Tuesday	13 Friday	13 Sunday	13 Wednesday	13 Saturday
14 <i>Easter Day.</i>	14 Wednesday	14 Saturday	14 <i>5th after Trinity.</i>	14 Thursday	14 Sunday
15 <i>Mon. in Easter Wk.</i>	15 Thursday	15 Sunday	15 Monday	15 Friday	15 <i>14th after Trinity.</i>
16 <i>Tues. in Easter Wk.</i>	16 Friday	16 <i>1st after Trinity.</i>	16 Tuesday	16 Saturday	16 Monday
17 Wednesday	17 Saturday	17 Monday	17 Wednesday	17 Sunday	17 Tuesday
18 Thursday	18 Sunday	18 Tuesday	18 Thursday	18 <i>10th after Trinity.</i>	18 Wednesday
19 Friday	19 <i>Rogation.</i>	19 Wednesday	19 Friday	19 Monday	19 Thursday
20 Saturday	20 <i>Mon. Rogation Days.</i>	20 Thursday	20 Saturday	20 Tuesday	20 Friday
21 Sunday	21 <i>Tues. Rogation Days.</i>	21 Friday	21 Sunday	21 Wednesday	21 Saturday
22 <i>1st after Easter.</i>	22 <i>Wed. Ascension Dy.</i>	22 Saturday	22 <i>6th after Trinity.</i>	22 Thursday	22 Sunday
23 Monday	23 Friday	23 Sunday	23 Monday	23 Friday	23 <i>15th after Trinity.</i>
24 Tuesday	24 Saturday	24 <i>2nd after Trinity.</i>	24 Tuesday	24 Saturday	24 Monday
25 Wednesday	25 Sunday	25 Monday	25 Wednesday	25 Sunday	25 Tuesday
26 Thursday	26 <i>After Ascension.</i>	26 Tuesday	26 Thursday	26 <i>11th after Trinity.</i>	26 Wednesday
27 Friday	27 Monday	27 Wednesday	27 Friday	27 Monday	27 Thursday
28 Saturday	28 Tuesday	28 Thursday	28 Saturday	28 Tuesday	28 Friday
29 Sunday	29 Wednesday	29 Friday	29 Sunday	29 Wednesday	29 Saturday
30 <i>2nd after Easter.</i>	30 Thursday	30 Saturday	30 <i>7th after Trinity.</i>	30 Thursday	30 Sunday
31 Monday	31 Friday	31 Sunday	31 Monday	31 Friday	31 <i>12th after Trinity.</i>
					32 Sunday
					33 <i>16th after Trinity.</i>
					34 Monday
					35 Tuesday
					36 Wednesday

Recipients of this useful Year-Book are asked to PATRONISE THE ADVERTISERS, who, by their enterprise have helped to make this issue a success.

Established 1900.

Telephone 244, Barnstaple.

# THE BARNSTAPLE SANITARY STEAM LAUNDRY

DEPOTS—

76, High Street,  
BARNSTAPLE.

South Street,  
BRAUNTON.

6, King Street.  
SOUTH MOLTON.

RALEIGH, ——— BARNSTAPLE.

## WHERE TO SHOP AT BARNSTAPLE **EDWARD THOMAS,**

*Ladies' and Children's  
Underclothing.*

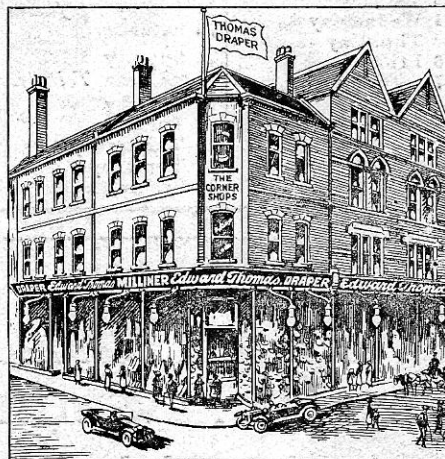
*Baby Outfits, etc.*

*"Chilprufe" Underwear for  
Children.*

KEENEST COMPETITIVE PRICES

The Celebrated "W.B.  
Corsets.

Barnstaple Leather Hats.



*Specialist in*

*Blouses,*

*Sport Coats,*

*Robes, Costumes,*

*Millinery.*

*Specialité: The Barnstaple  
Made Gloves.*

**37, HIGH STREET & 31, JOY STREET,  
The Corner Shops, BARNSTAPLE.**